



HAMPSONS
ESTATE AGENTS

FREE INSTANT ONLINE VALUATION IN JUST 60 SECONDS
valuation.hampsonsestateagents.co.uk/home/2262



- Local friendly team
- Marketing that makes a difference
- Regulated by the naea propertymark
- Traditional values
- Excellence as standard
- Professional photos and video tours

SUCCESSFULLY MOVING CUSTOMERS IN THE LOCAL AREA FOR OVER 17 YEARS

01162 147 555

TEANAHAMPSON@HAMPSONSESTATEAGENTS.CO.UK
WWW.HAMPSONSESTATEAGENTS.CO.UK



LOCAL KNOWLEDGE | EXPERT ADVICE | EXTENDED SUPPORT



LIFE published by Leicester Forest East Parish Council for the residents of Leicester Forest East.

SPRING
2023

life





ORBIT Coaches

Based in the Midlands, Orbit Coaches can provide a minibus, coach or double decker bus to suit your every need. With over 25 years of experience, we are guaranteed to provide an excellent service.

01455 823171
www.orbitcoaches.co.uk
office@orbitcoaches.co.uk



Piano and Vocal Tuition

Kate Burrows
BMus RHUL

From beginners to Grade 8.
Free trial lessons available.

For enquiries call 07968 668 606



np norwood press **All Your Printing Needs**

FLYER OFFERS

1000 A5 FLYERS £50
Printed Full Colour, Single or Double Sided, 150gsm Gloss Paper

2500 A5 FLYERS £85
Printed Full Colour, Single or Double Sided, 150gsm Gloss Paper

5000 A5 FLYERS £125
Printed Full Colour, Single or Double Sided, 150gsm Gloss Paper

BUSINESS CARD OFFERS

500 CARDS £45+VAT
Printed Full Colour, Double Sided, 450gsm Matt Laminated Board

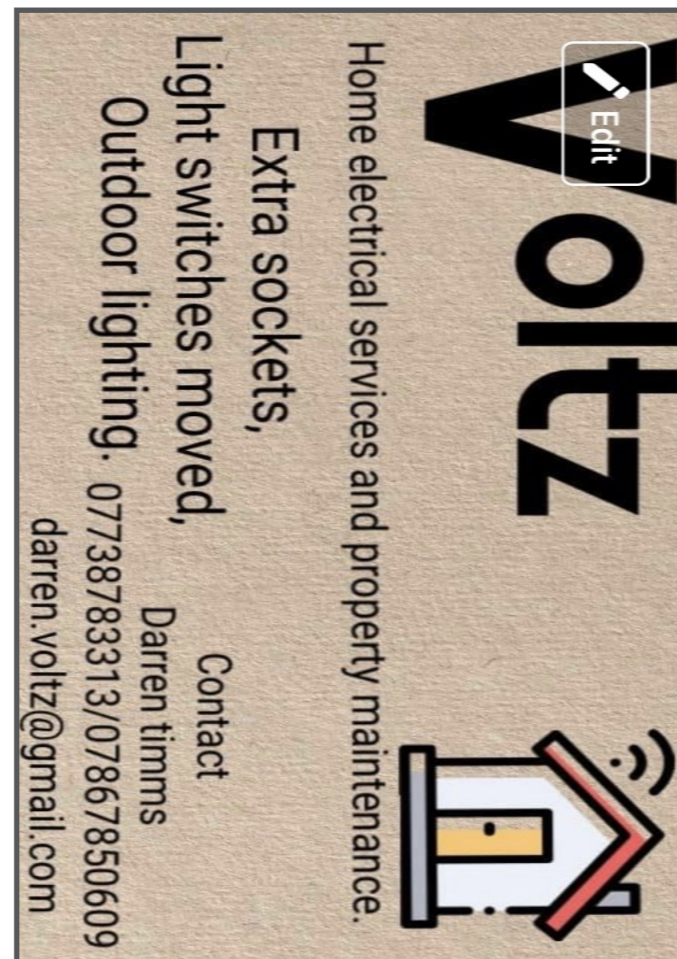
1000 CARDS £65+VAT
Printed Full Colour, Double Sided, 450gsm Matt Laminated Board

2000 CARDS £95+VAT
Printed Full Colour, Double Sided, 450gsm Matt Laminated Board

FREE DELIVERY WITHIN LEICESTERSHIRE

ROLLER BANNERS - STICKERS - MENUS
MAGAZINES - POSTERS - INVITATIONS
NCR PADS - BUSINESS CARDS - LEAFLETS

t: 01530 262020 | e: info@norwoodpress.co.uk | w: www.norwoodpress.co.uk
Unit 1 | South Leicester Industrial Estate | Ellistown | Leicestershire | LE67 1EU



Voltz

Home electrical services and property maintenance.

Extra sockets,
Light switches moved,
Outdoor lighting.

Contact
Darren timms
07738783313/07867850609
darren.voltz@gmail.com

Contacts

MISSION STATEMENT

The mission of Leicester Forest East Parish Council is to work towards representing and promoting the interests and wellbeing of the Parish.

PARISH COUNCIL OFFICE

Opening Hours: 10.00am to 12 noon, Monday-Friday.
The Parish Hall, Kings Drive, Leicester Forest East, Leicester LE3 3JE
Telephone: 0116 2390039
Email: clerk@lfeparishcouncil.org.uk
Website: www.lfeparishcouncil.org.uk
Facebook: www.facebook.com/LFEPC

PARISH COUNCIL

Clerk to the Parish Council: Holly Mann
Assistant Clerk to the Parish Council: Leigh-Ann Holland O'Brien
In the first instance all enquiries should be made via the Parish Office.
Chairman -
Russ Darlison - email russelldarlison@yahoo.com
Vice-Chairman -
Peter Kitchen - 07745 455677 or email peter.kitchen@btinternet.com
Councillors:
David Dawes - 0116 2395884
David Di Palma - 07594 419 570
Colin Wells - 07980 051070

PARISH COUNCIL MEETINGS

Are held on the third Wednesday of each month in the Reg Neal Meeting Room, Parish Hall, Kings Drive, starting at 7.00pm.

For dates/times of Committee Meetings please refer to the parish notice boards or the parish website www.lfepc.org.uk

Members of the Public are welcome to attend all meetings where time is made available to raise matters relating to items on the Agenda.

OTHER REPRESENTATIVES

County Councillors: Nick Chapman
email: cllr.nickchapman@gmail.com
Lee Breckon
email: Lee.Breckon@leics.gov.uk

District Councillors: Stuart Coar 07719 997706

Member of Parliament: Edward Argar - Email: edward.argar.mp@parliament.uk

PREMISES OFFICER Mrs. B. Bozzoni 07735479938

LOCAL POLICING

Please call 101 or alternatively you can email leicesterforesteast@leicestershire.pnn.police.uk
Crimestoppers: Tel. 0800 555 111

ABOUT LiFE

LiFE is the community magazine published by the Parish Council for residents of Leicester Forest East and distributed free of charge to all properties within the Parish. All communications should be directed to the Parish Office (address above). Leicester Forest East Parish Council would like to thank all contributors to LiFE.

DISCLAIMER: Please note that the opinions expressed by our various contributors are not necessarily those of your Parish Council. We cannot guarantee the veracity or accuracy of any advertisement, which we publish in good faith.

Welcome

WITH PAUL LINNETT, OUTGOING PARISH CHAIRMAN



Hello and welcome to the Spring 2023 edition of LiFE. This edition is slightly later than previous years due to the recent local elections. As far as the Parish Council is concerned, six councillors have been elected unopposed. Five were existing councillors and we have one new councillor, Colin Wells. Colin has recently attended a few council and committee meetings as a member of the public and decided to stand at the election. I would like to welcome him aboard.

We should have 10 councillors and so, if you would like to help us, please contact Holly, our clerk (phone number 0116 239 0039 or email clerk@lfeparishcouncil.org.uk). If you want more details about being a parish councillor, go to the council's website at www.lfeparishcouncil.org.uk and click on Parish Councillor Recruitment.

One person, who had been on the council for four and a half years, decided not to stand at this election. Corinne Laurence joined us in October 2018 and has worked hard to make sure the parish council finances were put on a more robust footing. With considerable input from her, the council opened an internet banking account and purchased a computerised finance package which allowed payments to be made by bank transfers, instead of posting cheques out. She helped the clerk and the assistant clerk with the installation and working of the finance computer system. She has also supported the council at all events. I will miss her valuable contributions at meetings and wish her well for the future.

Achievements

LFE Parish Council has achieved the Foundation Award of the Local Council Award Scheme (LCAS). The Foundation Award demonstrates that a council has the required documentation and information to operate lawfully and according to standard practice, and has the foundations and policies for improvement and development in place.

LCAS celebrates the successes of the best local (parish and town) councils and provides a framework to support all local councils to improve and develop to meet their full potential. Well done Holly, staff and councillors. Litter Picks

There have been two litter picks since the last LiFE magazine, one on 19 November last year and the other on 26 March. More than 20 people helped us collect a

Welcome

WITH PAUL LINNETT, OUTGOING PARISH CHAIRMAN

lot of litter on both of these dates and were able to enjoy a breakfast bap, a drink and a chat in the parish hall afterwards. Thanks to everyone who came. We are planning to have another one in the summer but if anyone wants to litter pick on their own, equipment is available to loan from the parish hall. Contact Holly to arrange this.

Improvements to the Parish Hall Car Park

Both sides of the entrance to this car park have now been tidied up with the addition of a few more parking spaces.

Wildflower Area on Forest East Park

Work has continued on a wildflower area between the park and playing fields. There are now four seats and a path round it to access the seats. Councillors Russ Darlison and David Dawes planted bulbs on the far side of this path, and, although we were not sure whether any flowers would come through this year, I think you will agree, we had a good display of colours. It is hoped that in June some children from Stafford Leys School will be helping to plant wildflower seeds in this part of the park.

We may create a remembrance garden in this area of the park, depending on the views of residents (see a separate article on this).

Picnic in the Park

We are again having music in the park. It will be on Sunday 20 August starting at 2pm. The Quorn Ukulele Orchestra (QUO) will be making a return visit and, for the first time, we will be welcoming the Enderby Brass Band.

You can bring your own food or buy from one of the food outlets we are inviting to attend.

Live Shows/Events in the Parish Hall

On Friday 17 February there was an excellent evening of blues performed by the Daniel Smith Blues Band in the hall.

There will be another quiz on the evening of 7 October, and a craft fair on 4 November. More details to be advertised nearer the time.

Free advertisements

In order to support local businesses, advertisements of a quarter page or smaller are free in this edition of LIFE

I hope that everyone has a good summer and I hope to see some of you at our forthcoming events.

Paul Linnett - Chair

Daniel Smith Blues Band

The Parish Council welcomed Daniel Smith and his Blues Band to the Parish Hall on Friday 17th February; the hall was packed for what was an excellent night.



ADVERTISE FOR FREE IN THE **LIFE** MAGAZINE
For further details contact the Parish Office

Local Council - Foundation Award

The Chair of the National Association of Local Councils has written to congratulate the Parish Council on achieving a Local Council Award Scheme – Foundation Award. He went on to state the Council has gone 'above and beyond its legal obligations' and is a leader in the community.

The Council should, therefore, be 'congratulated immensely'. Well done to all those involved in the Council over the last four years, who have worked to bring the Council up to this high, nationally recognised standard!



Tuesday Teapot Group

This is a drop-in group open to all who are retired and would like to meet others in a sociable atmosphere for a friendly chat.

Venue Leicester Forest East Library
76 Rushmere Walk, LE3 3PD
(next to Stafford Leys school)

When Time 2nd and 4th Tuesday each month
2.00 to 4.00 p.m.

Cost £2.50 for tea or coffee and cake

Contact 0116 229 9277



Directory

DOCTORS

Forest House Medical Centre, 2a Park Drive, LE3 3FN
and **Warren Lane Surgery, Leicester Forest East LE3 3LW**

Enquiries: (0116) 2898111 (Not between 12.30pm and 1.30pm)

Website: www.foresthousemedicalcentre.co.uk

Opening Hours:

Both surgeries - Monday to Friday - 8am to 6pm

Both surgeries are closed from 12.30pm-1.30pm for lunch

This closure does not impact on the services delivered or number of appointments that are available at the surgery.

Forest House Medical Centre - Saturday Clinic - 8am to 12.00pm (for pre-booked nurse appointments).

TELEPHONE:

Surgery telephone number for both surgeries 01162898111. The Out of Hours phone number is 111. The District Nurse phone number is 0300 300 1000. Visit the Surgery Website for up to date information at www.foresthousemedicalcentre.co.uk

NHS Direct

Telephone: 111 www.nhsdirect.nhs.uk

CHURCHES

St. Andrews Church

Hinckley Road, LFE, LE3 3PF

Email: standrewslife@gmail.com

Telephone: 07961749215

Revd Judith Lincoln (0116 231 3957)

judith.lincoln@methodist.org.uk

Revd Dave Hover 01455 649 762 and

revdhover@gmail.com

St Andrew's Service Times

Main Service - 11:00am every Sunday

Messy Church (for families) - 3.00-5.00pm every first Sunday

Beacon LiFE church

Charnwood Drive. Contact Pastor Ian - 07777677594

Church - 0116 2393112

Our Services are: Sunday Gathering with

children's gathering - 10.30am

Blessed Sacrament Catholic Church

Gooding Avenue. The Priest's House: Tel: 0116 285 8795

Services at 6pm Saturday evening then

Mass at 5pm Saturday at 9.30am Sunday.

Junior Church at Sunday services

Update from St. Andrew's Church

It's been a busy few months at St. Andrew's, with plenty going on as always! It was a great delight to once again host the Christmas Tree lights switch-on, with which we were blessed with dry (if chilly) weather for our festive sing-song led by Peter and Colleen Kitchen with backing vocals by Revd Judith! With festive drinks and nibbles, it made the perfect start to the celebration of Christmas.

This continued with our Messy Church Christingle service, a concert by Musical Village choir (members of whom also sang for us at our Christmas Midnight service) and our always fun Nativity Service on Christmas Eve. It was wonderful to welcome so many from the LFE community across the Christmas season.

We continue to be a hub for many community events and services, with our Church Hall being much in demand for regular and occasional bookings. As well as the Scout and Guide groups that meet on site, we also now host two other Christian fellowships, the Mar Thoma Church and St. Mary's Syrian Orthodox Church – both of whom trace their origins to India and attract worshippers from across Leicester and beyond. We hope to continue to advance our environmental aspirations for the site and continue our development as an accredited 'Eco-Church', working with all our regular site users to reduce our carbon footprint and manage the green areas around the church and hall as a haven for wildlife, as well as a valued green quiet space for all in our community.

Our fortnightly Saturday Coffee Shop continues to be well supported and providing a welcoming space for people to gather, to chat and to enjoy good coffee and delicious cakes.

Away from the church buildings we have continued our ministry in local care homes bringing a monthly service of prayers and sing-along hymns to the residents. We also go into local schools as part of a multi-church Open the Book Team performing monthly interactive re-tellings of Bible stories. Once again, great relish was taking in crucifying the vicar as part of the telling of the Easter story! I write this ahead of our Easter celebrations this year, which we are greatly looking forward to and hoping will be enjoyed by many of you – you might have spotted our team out and about on Good Friday distributing hot cross buns! The abounding joy of Easter, following so quickly on from the reflection on Good Friday of Jesus Christ's suffering and dying for all our sakes on the cross, reveal God's close connection with the highs and lows of human experience. The Christian good news is that God does not stand removed from the realities of what it



means to be human in a world where we so often see violence, intolerance and greed seemingly running the show, with untold suffering around the world as a result.

God stands in the midst of all of that, and in Jesus took the worst of humanity's evil and suffering upon himself on the cross, and then rose to new life again on Easter day in a glorious victory over death that reveals the truth of God's promise of eternal life offered to all. If you are interested in finding out more about the Christian faith or finding out what answers the Bible offers towards the big questions of life, look out for news coming soon of an exciting new opportunity to do just this in a relaxed environment that needs no prior knowledge or experience of church.

As your local parish church, we continue to be here to journey alongside all in our community through times of joyous celebration, as well as support and comfort for those times when life becomes a struggle, perhaps following a bereavement. Anyone who lives in the parish of Leicester Forest East can have a wedding, funeral, christening, baptism or thanksgiving ceremony for the birth of a child in St. Andrew's Church and / or celebrated by one of our ministry team. To find out more, please contact Revd Dave Hover (Church of England minister) Tel: 01455 641804 Email: revddavehover@gmail.com or Revd Judith Lincoln (Methodist Minister) Tel: 0116 231 3957 Email: Judith.lincoln@methodist.org.uk.

We are continually looking for new ways to support people in the LFE community and to share more of why we do what we do, sharing the love of God with our friends and neighbours as God loves all of us. If you have any ideas of things we could be doing as a local church, we'd love to hear from you and to explore those ideas further with you.

It's looking like things are not going to get less busy any time soon!

With every blessing,

Revd Dave Hover

Anglican Minister, St. Andrew's Church, LFE.

L.F.E. Film Evenings

Our first Thursday of the month Film Evenings were a well-established event before the dreaded Covid outbreak affected us, in the same way that almost every other aspect of life was disrupted. During that close down, our main supporters, Phoenix Arts of Leicester, had to withdraw their help which had been available through their outreach programme. Consequently we had to rethink our activities, and how to go it alone.

Our primary concern was the public viewing licensing – we would have had to apply for every film planned. Quite an expensive and onerous task for us volunteers! Fortunately, after some research, we discovered an alternative means, which provided an annual licence – but the downside being that publicising specific films is not allowed!

So we were able to resume our Film Evenings, but recovery was slow, possibly due to people being uneasy at congregating indoors again. LFE Parish Council became aware of our concerns, and graciously stepped in to provide support.

The Parish Council appreciated the value of the Film Evenings as a community activity, and also wished to encourage our residents to resume their social activities after Covid. They offered to bankroll us, meaning our overheads were reduced. They also requested that the event be run by the same team of volunteers, because they hadn't the facilities to do so. The result is that Film Evenings have been able to continue since September 2002, to all intents and purposes as before. Not only that, but our audiences have benefitted immensely by us being able to provide the Film Evenings as a free event. Yes – totally free!

It's a long story as to why, but it revolves round local administration and red tape, so enough said!

"How do I know what film is showing?" we hear you ask. Well, we have established an email database with which we circulate the information once or twice beforehand each month.

Democratically, three or four future films are chosen by the audience from a short list of six or seven listed on a voting form. For anyone not having experienced these film shows, we need to emphasise that we are NOT a club – if a film appeals, you just need to come along at about 7.00pm on the first Thursday of every month, collect a free hot drink and biscuit, and find a seat. But be aware we do not open in July or August (we volunteers need a break!).

The Film Evening team

Girlguiding 1st LFE Rainbows and Brownies



These groups meet at St Andrews Church Hall Hinckley Road on Thursday evenings (term time only). Rainbows (girls 4-7 years old) meets between 5.15. and 6.15pm and Brownies (girls 7-11 years old) meets between 6.15 and 7.30pm.

At present there are 3 of us who have been volunteering for many years to ensure that the young girls in LFE have the opportunity to join a group which offers the opportunity to learning new skills, making new friends and playing games all while having fun, completing challenges and working for badges. We are now the only groups in LFE and Kirby Muxloe, and we have a waiting list of girls which we do not have space for due to adult/ young person ratios and lack of volunteers.

Our Rainbow unit desperately needs another regular adult volunteer to join the current team. With only 2 of us running this group if one of us is ill, has extra work commitments or simply gets stuck in traffic on the way home from work we cannot run a meeting, and even with 3 running the Brownie group it can still be a challenge. We desperately need extra help if we are going to survive!

In addition it would be nice to have extra volunteers to enable us to re start our Guide unit (girls 10-14).

As I write this article it is the Coronation weekend with the Big Help Our encouraging us all to volunteer in our communities - have you considered this valuable way of helping the young people in LFE? If you want further details or are willing to offer to volunteer please contact Colleen Kitchen via email: colleen.kitchen@btinternet.com



Messy Church meets at St Andrew's church, Hinckley Road LFE on the first Sunday in every month (except August) between 3 and 5pm.

Messy church is for families - these can be a parent(s) and children, grandparents with grandchildren or aunts and uncles with nieces and nephews - it is a chance for us all to explore the stories from the bible in an interactive and fun way. The activities are aimed at 3-11 year olds but many toddlers are able to complete activities with parental help, and older children are welcome to join in.

From 3pm we are in the church hall where there is a selection of craft activities to be completed. Then we move into church for a short interactive story and song before going back to the hall for refreshments (cake and drinks) and a chance to chat together.

Here are some of the crafts we have completed recently:



If you would like to know more please contact Colleen Kitchen: messy@standrewslfe.org.uk or just turn up on the first Sunday of the month.

Your Parish Council needs you!



Call the Clerk on 0116 239 0039 (or email clerk@lfeparishcouncil.org.uk) to discuss becoming a Parish Councillor

David Clements

I was very sad to learn that David died on 30 December last year.

His funeral took place in St. Bartholomew's Church in Kirby Muxloe and it was good to see that so many people attended to pay their respects to him, wearing colourful clothing, as David had requested.

David had been a longstanding Member of Blaby District Council and served Leicester Forest East as District Councillor for 21 years. He was Chairman of the District Council from 2013 to 2014 and, in this capacity, performed the opening ceremony of LFE Parish Hall following its extension and refurbishment.

I first met David in 2013 when I joined the parish council. He always attended monthly LFE Parish Council meetings, giving us information on what was happening at Blaby District Council and also problems he was dealing with on behalf of LFE residents. He was extremely supportive of our parish council and was very approachable and friendly. He is remembered fondly by all parish councillors who came in contact with him.



Councillors Surgeries

Over recent months Councillors have attended 'Meet the Council' events during coffee mornings at St. Andrew's Church and the library. Thank you to all those who have come to speak to us about a variety of issues and with suggestions for improvements, they are very much appreciated.



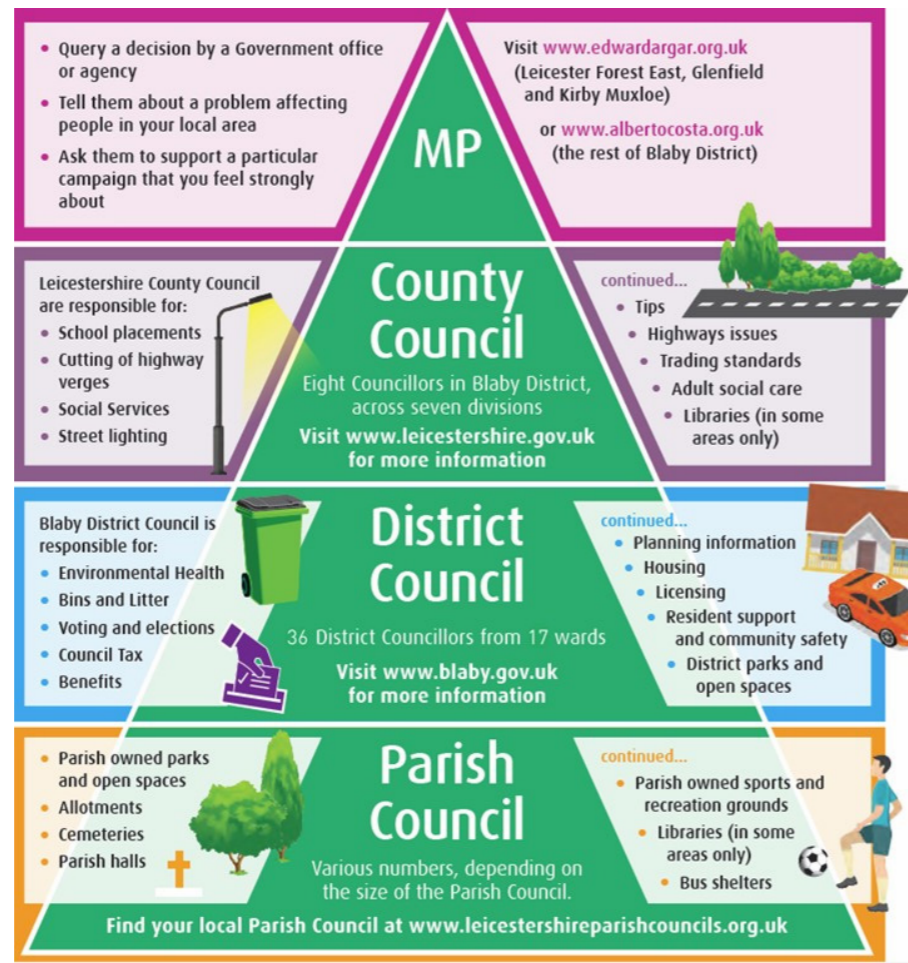
Garden of Remembrance?

The Parish Council would like to know residents' opinions on a Garden of Remembrance in Forest East Park, for the scattering of ashes. Is a Garden of Remembrance something residents would like to have? Please let the Clerk have your views on 0116 239 0039 or clerk@lfeparishcouncil.org.uk.

New Grants Policy

The Parish Council has recently introduced a new grants policy which now includes smaller grants towards running costs etc. for community groups. Please see the link below and email the clerk on clerk@lfeparishcouncil.org.uk if you think your community group may be eligible.

www.lfeparishcouncil.org.uk/policies.html



LFE PARISH HALL HIRE

KINGS DRIVE, LEICESTER FOREST EAST, LE3 3JD



For Social Functions, Clubs, or Meetings. All with use of kitchen facilities.

Cost Per Hour:

Main Hall - £25 Private or £15 Regular Users.

Cafe Area - £10.50 per hour

For more information or to book the hall please visit

www.lfeparishcouncil.org.uk/parish-hall



L.F.E Community Library

Afternoon Tea in Celebration of King Charles 111 Coronation – Saturday 29th April 2023

Our Afternoon Tea Event which was held in the library on Saturday 29th April in Celebration of King Charles 111 Coronation took a lot of organising and preparation by not only our Volunteers, but also a few generous library users, who baked some delicious tray bakes.



Our thanks go to them all.

The library was decorated with bunting and flags, and even little flags on some of the cakes to add to the 'Celebratory' atmosphere.

The afternoon was a great success with plenty of sandwiches, little sausages rolls, savoury tarts, scones, cakes and cupcakes savoured by all who attended.

Thank you to everyone who supported us.

1st Saturday of the Month Coffee Morning 3rd June, 10am to 1pm

Due to the King's Coronation taking place on Saturday 6th May the library will be closed and therefore our next 1st Saturday of the Month Coffee Morning will be held on 3rd June and we look forward to seeing you all then.

Room for Hire

Did you know that you can hire the library for meetings, birthday celebrations, groups, etc?

Visit our website www.lfelibrary.org and go to 'Hiring the Library' for the costs.

All the proceeds goes to help us running the library

Volunteers Needed

Are you recently retired or have a few hours to spare? Looking for something to do on a voluntary basis? We are in need of new volunteers at the library. Can you

spare a couple of hours a week to tidy shelves, make drinks, help out at our events? You don't have to be computer literate as full training will be given.

If you can help, visit our website and fill in the Volunteer form and we will be in touch or pop in to the library to have a chat with one of our volunteers.

Future Events for your diary

16th / 23rd June – Quiz Night – To be confirmed

18th August – Family Bingo Night

16th September – Autumn Fair

4th November – Diwali Celebration

18th November – Christmas Fair

Regular Groups

Monday 7pm to 9pm – LFE Stickers

Tuesday Teapot Club 2pm to 4pm –
2nd & 4th Tuesday of the Month

Wednesday 10am to Noon – Coffee & Chat – all ages welcome

Wednesday 6pm to 8pm – Craft Group

Thursday 10am to Noon – Baby & Toddler Meet Up Group (up to 2 years)

Thursday 3rd Thursday of the Month 7pm to 9pm – The LE3 Ladies Group

Friday 2.30pm to 3pm & 3.15pm to 4pm – Busy Bees

Opening Times

Monday	2pm to 5pm
Tuesday	Closed
Wednesday	10am to 4.00pm and 6pm to 8pm
Thursday	10am – 12 Noon and 2pm to 4pm
Friday	2pm – 5pm
Saturday	10am – 1pm
Sunday	Closed

Please contact the library on 0116 2336273 or our website, www.lfelibrary.org if you have any queries about any of the above groups. Or just turn up on the day.



BE PART OF SOMETHING

My Tribe

Specialist Postnatal Fitness Classes without the need for childcare

MUMMY TRIBE
WEDNESDAYS 10AM
PARISH HALL, LEICESTER FOREST EAST

EMAIL JO@THISISMYTRIBE.CO.UK
CALL 07830 356620
www.thisismytribe.co.uk
@mytribeleicestershire

Michelle Ann School of dance

EST. 2007

Classes in LEICESTER FOREST EAST!!!

Does your child love to sing, dance and act?!

Would they love to be a part of annual shows, competitions and examinations?

Why not join us at our new Leicester Forest East branch on Wednesdays For ages 3 upwards.

Musical Theatre Ballet Acrobatics Tap Modern

Contact us for more information or to book your child's space at michelleanddance@gmail.com

Check out our social media pages for credentials

Michelle Ann School Of Dance
@michelleann_schoolofdance

Nina's Bowtique

Homemade nice and affordable hair accessories

Check us out on facebook (Nina'sBowtique)

Or Instagram (ninasbowtique9)

Messy Movers

Messy and sensory play classes

Classes held in Leicester Forest East throughout the week

We also run... Messy Play Parties

OPENING HOURS Monday 2.00-5.00pm - Wednesday 8.30am-12.00pm - 2.00-4.00pm - 6.00-8.00pm
Thursday 10.00am-12.00pm - 2.00-4.00pm - Friday 2.00-5.00pm - Saturday 10.00am-1.00pm

Planning, Trees and Highways

On April 6th Blaby District Council Planning Committee were considering the planning application for the development of 800+houses proposed around the Rugby Club along the A47. Prior to the meeting the development had been recommended for permission to be given by the committee.



HOWEVER due to a presentation given by LFE parish council with other local support a motion was passed to defer that decision.

For Blaby Council this decision was, we believe, a first for a development of this size in their area and caused significant concerns as it was thought to be a rubber stamp exercise!!

Your parish council highlighted in detail how LFE will bear the brunt of this new development and that we do not have the infrastructure to support an additional 800+ homes (doctors, dentist, shops, schools – until a primary school is built on the development).

Then traffic. An additional 1600 cars on our roads. This is in addition to another 4000+ cars when Lubbethorpe is completed, potentially 2000+ cars when new developments are underway in Barwell and Earl Shilton together with those continuing at Ratby, Desford and Newbold Verdon.

Much of this traffic finds its way onto the A47 via Desford Crossroads and Kirby Lane.

Proposals by Leicestershire County Highways included a roundabout at Desford Crossroads, a roundabout where the new proposed development will be and then minor adjustments to the junctions at Beggars lane and Kirby

Lane.

Blaby Planning Committee are now considering options, one of which is demanding Leicestershire County Highways demonstrate in plain English how their proposals will mitigate the appalling traffic along the A47.

Be assured that your parish council and district councillors will continue to fight for LFE.

As regards traffic, there are still concerns over speeding (or inappropriate speeds) along Forest House Lane, Warren Lane, and Beggars Lane. The council arranged a meeting for all residents and other interested parties such as county highways, police, doctors but there was a negative show except by one of our local bus companies and 6 residents. We are arranging for an additional, moveable, speed activated sign to be positioned along Warren Lane.

We have no jurisdiction over traffic calming, speeding etc and the authorities will take no action if the council are not supported by significant numbers of affected residents.

The development off Baines Lane is still subject to further planning review and has not yet been approved. We await further news. Vista has demolished properties on their land close to St. Andrews Church and hopefully construction will begin this year. We hope that residents approved of the new Xmas decorations along the A47 and following feedback we are going for taller ones this year.

The council continue to welcome constructive and pertinent comments from residents on all matters related to our planning infrastructure and roads. And again, we would welcome new faces to join the council.

Peter Kitchen

Leicestershire Guild of Spinners, Weavers and Dyers

Leicestershire guild of spinners weavers and dyers meet at the Leicester Forest East village hall on the third Saturday of each month to learn and share the crafts of spinning weaving and dyeing as well as other fibre related crafts such as felting knitting crochet.

All welcome to visit for a coffee to see what we do. 10.30 till 3.00. £4. For further info contact SecretaryLeicestershireWSD@gmail.com or on our FB page Leicestershire Guild of Spinners Weavers and Dyers.

Update from West Leicester Catholic Churches: The Most Blessed Sacrament and Saint Peter

During 2022, the two Catholic Parishes of Blessed Sacrament on Gooding Avenue in Braunstone and St Peter's on Hinckley Road in West End amalgamated forming the one Parish, which serves a large community inclusive of the neighbourhoods in Braunstone, Braunstone Town, Leicester Forest East, Kirby Muxloe, Western Park and the West End.

We come together in the celebration of Mass, where our regular weekly Mass times are:

Saturday Vigil Mass: 5pm - Blessed Sacrament
6.30pm - St Peter's

Sunday Mass: 9.30am - Blessed Sacrament
11.15am - St Peter's

For further details of all the Mass times, which can be found in the weekly Parish Newsletter online at www.westleicesteratholic.org Outside of both Churches the weekly newsletter is available on the notice board and it has the most up to date information about what is happening in the Parish.

In the Parish you are very welcome to come along too any of our regular meetings, which are held in our Halls adjacent to the Churches:

- **Friday "Pop in"** at Blessed Sacrament Hall, this is a weekly sale from 10am to 11.30am, where you can get a bargain, have a coffee and a chat

- **Friday Coffee Club** meets weekly at St Peter's (starts about 10.40am after Mass) Tea, coffee, chat & fun raffle, £1 entrance

- **Wednesday "Drop in and Drop off"** meets twice a month at Blessed Sacrament Hall, on the second and fourth from 2pm to 4pm.

Different activities take place but the main ingredient is the opportunity to meet with others and have cake with a tea or coffee.

Those attending can also use this opportunity to drop off items for either the Pop in or for Foodshare hence the title Drop in Drop off!

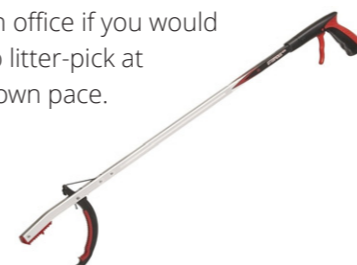
Litter Pick

Thank you to all those who have attended the Council's recent litter-picks.

A huge amount of litter has been collected; we hope the post-pick breakfast baps were enjoyed!

The Parish Council has organised several community litter-picks recently.

However, please note that litter-pickers are available from the Parish office if you would like to litter-pick at your own pace.





DISTRICT COUNCILLOR STUART COAR REPORTS

Hello Everyone

It is with great sadness that I have to start my report with such sad news, but I have to advise you all that we lost a very loyal and long-standing District

Councillor for Leicester Forest East in December last year, Councillor David Clements. David represented LFE for many years and always had our wonderful Parish to heart at all times. He was on many committees at BDC and fought hard to ensure LFE received the support it required over the years. I am sure some of you will remember him when he was Chairman of Blaby District Council, a role that he absolutely cherished with his wife Joan beside him at all times.

For me personally, David was an excellent mentor and indeed a very good friend, and when I joined Blaby District Council 8 years ago, he provided fantastic support to me and advised who to contact at the Council to get things sorted for my Constituents, and for this I am very grateful and he will never be forgotten. - RIP David.

I would like to thank each and every one of you that voted for me in the recent Local Elections, seeing the ward change from Leicester Forest East to "Leicester Forest and Lubbethorpe" was a little concerning but, I realised Councillor numbers had to be reduced and ward sizes increased to accommodate the Electoral Commissions requests moving forward. The best way to do that was to join LFE and Lubbethorpe as one ward, and I am very grateful for your continued support of this move, and I promise to do my best at ensuring Leicester Forest East remains the wonderful place it is today for all of us to live in, and I am extremely humbled to have had all your votes and support.



Our ward now becomes a three Councillor Ward, and on this occasion I would also like to pass on the sincere thanks to all of you that voted for my two new colleagues too, (pictures above) namely Dillan Shikotra and Matt Tomeo, both very keen and enthusiastic Councillors, with Dillan living in LFE and Matt living in Lubbethorpe, we now have three of us fully conversant and supportive of the new Ward.

Currently, neither have their new email addresses or contact numbers but they will be available to everyone in the next week or so (please see BDC Website, under "your councillor").

Once again, my sincere thanks to all of you that voted for us, it really is very much appreciated and I can assure you all that we will continue to support the Local Parish Council and each and every resident of Leicester Forest East and Lubbethorpe to ensure that our area remains the wonderful place to live that we all currently enjoy today.

Best Regards

Stuart Coar
Councillor Stuart Coar



Wildflower Garden

Leicester Forest East Parish Councillors have been out and about in the last few weeks planting a variety of trees and over 2,000 bulbs in the Wildflower Garden and Forest East Park.

Some of these bulbs have flowered this year and looked beautiful. A big thank you to these Councillors for their hard work!

The aim is to add colour to the parks and to increase biodiversity.

What's On

WHAT'S ON IN LEICESTER FOREST EAST

PARISH HALL, KINGS DRIVE

MONDAY

FITNESS CLASS 9.15 - 9.45am

FITNESS CLASS 10.00 - 10.45am

SCOTTISH DANCING 11am-1.45pm

TUESDAY

STEADY STEPS PLUS
10.45am-11.45am

STEADY STEPS 11.45am - 1.00pm

PILATES CLASS 7.00pm - 8.00pm

WEDNESDAY

MY TRIBE 10.00 - 11.00am

MICHELLE ANN SCHOOL OF DANCE
4.00 - 6.30pm

THURSDAY

BABY SENSORY
7-13 months 10.10am - 11.00am
0-6 months 11.20am-12.10pm

FITNESS CLASS 6.00 - 7.00pm

LFE FILM EVENING First Thursday of the month - 7.00pm for a 7.30pm start prompt.

SATURDAY

FITNESS CLASS 9.30 - 10.15am

SPINNER AND WEAVERS
10.30am - 3pm - Every 3rd Saturday

Leicestershire Guild of Weavers, Spinners and Dyers.

A group of yarn and textile enthusiasts who meet on the third Saturday of the month at Leicester Forest East parish hall, 10.30am to 3pm. We share our passion and exchange hints, tips and knowhow and hope to get back to a "bring and share" lunch very soon. Novices, the experienced crafter and the just curious very welcome. For more information, contact: secretaryleicestershirewsd@gmail.com

For more information or to book the hall please visit

www.lfeparishcouncil.org.uk/parish-hall

ST. ANDREW'S CHURCH HALL

TOTS & DOTS: Mums & Toddlers meet in term time on Tue 1.15 - 3.00pm (07813264879)

RAINBOWS & BROWNIES
5.15 and 7.30pm

KAREN LOOMES DANCE ACADEMY:
Wednesdays & Fridays - 4:30-8.00pm

SILVERLINERS: LINE DANCING,
Mon. 7.30-9.30pm, Wed. 1.00-3.00pm, (07725 441906)

MATRIX MARTIAL ARTS:
Mon. 4:15-7.15pm - (07949 915577)

BROWNIES & RAINBOWS:
Thur, 5.15-7.15pm (0116 2392694)

92ND LFE SCOUT GROUP:
Meet behind St Andrew's Church
92ndgsl@gmail.com

Explorer (14-18), Mon 7.00-9.00pm

Scouts (10.5-14), Fri 7.00-9.00pm

Cubs (8-10.5), Thur. 6.30-8.00pm

Beavers (6-8), Wed. 6.00-7.00pm

SATURDAY COFFEE SHOP:
Second & fourth Sat. 10.00am-12.00 (07961 749215) Held in the Church

YOGA GROUP TUESDAYS:
6.30pm-7.30pm 07849 552997

MESSY MOVERS SESSIONS:
Monday, Thursday & Friday mornings
07977 521563

Musical Village Choir:
Thursday evenings in the Church

FOR HALL BOOKINGS ENQUIRIES
PLEASE PHONE 07961 749215

LEICESTER FOREST EAST COMMUNITY LIBRARY

SATURDAYS

1ST SATURDAY OF THE MONTH COFFEE MORNING - 10am to 1pm
Including Construction Club for kids

MONDAYS

KNIT & NATTER: 7pm - 9pm

TUESDAYS

TUESDAY TEAPOT CLUB: 2pm-4pm
2nd & 4th Tuesday of the month -

WOMEN'S WELL BEING SESSIONS, TAICHI & QIGONG: 7pm - 7.45pm

WEDNESDAYS

TEA & TOAST: 8.45am - 10am

COFFEE & CHAT: 10am - Noon

CRAFT GROUP: 6pm to 8pm

THURSDAYS

BABY & TODDLER GROUP:
10.00am - Noon

LE3 LADIES GROUP: 7.30pm - 10pm
Every 3rd Thursday of the month

MONTHLY MEDITATION SESSIONS:
6pm - 7pm - 1st Thursday of the month

FRIDAYS

STORY & RHYME: 2.30pm to 3pm

For details on hiring the library go to www.lfelibrary.org or call 0116 233 6273

BRAUNSTONE WEST SOCIAL CENTRE ST. MARY'S AVENUE, BRAUNSTONE

PLAYSCHOOL Term Time Only
Mondays - Fridays 9-2pm

MONDAYS

CHILDRENS DANCING 4.30-5.30pm

LINE DANCING 8-10pm

TUESDAYS

NATIONAL TRUST
2nd Tuesday Sept-Apr 7-10pm

LEICESTER INDUSTRIAL HISTORY GROUP
3rd Tuesday of the month, 7-10pm
Back in September 2022

WEDNESDAY OVER 60'S 1.30-4.00pm

WEDNESDAY

OVER 60'S 1.30-4.00pm

KUMON MATHS AND ENGLISH
4.15-6.15pm

THURSDAYS

WHIST DRIVE 7-10pm

FRIDAYS

TAI CHI 2.30-3.30pm

LINE DANCING MONTHLY 7-10pm

CHURCH GROUP 6-9pm

SATURDAYS

KUMON MATHS AND ENGLISH
10-12noon

CRAFTY STITCHERS

2nd Saturday of the month 1.30-4.30pm & 4th Saturday of the month 9.30-5.00pm - 3/4 times a year.

SEQUENCE DANCING MONTHLY
7.30-11.30pm

SUNDAYS

CHURCH 10am

VIKINGS 1- 3pm (Not Every Week)

COMMUNITY CENTRE, STAFFORD LEYS

CASTLE JUDO CLUB:

Mon./Fri. 6.30-9.00pm (in the school hall, each split into three sessions)

FUNKY FIT FOR KIDS:

Wed. 3.30-4.15pm - (07872 612522)

MILAP ASIAN GROUP:

Fri. (0116 2394671)